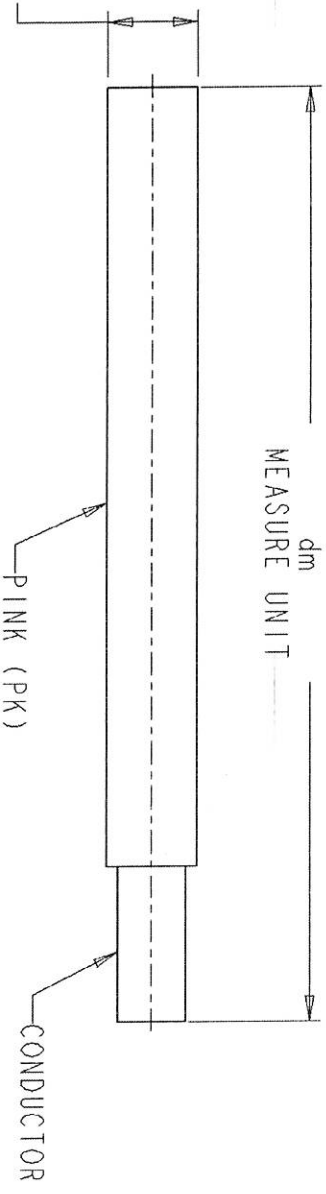


METRAIC

466-6

CERTIFICATIC
 NO DEVIATION OR CHANG
 WITHOUT ENGRG APPROVA

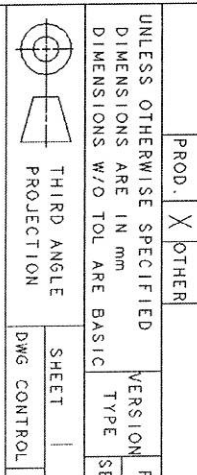


CONDUCTOR----- 3 mm²/12 AWG (19/25 STRANDED NICKEL PLATED COPPER)
 INSULATION----- POLYTETRAFLUOROETHYLENE (PTFE)
 VOLTAGE RATING----- 600 V
 OPERATING TEMP RATING----- -70°C TO +250°C
 APPROVALS----- CONFORMS TO UL STYLE 1659

MATERIAL	HT TR
A IE1541F	WROUGHT MATL
IE4246B	ELEK SUBSTANCE
IE2722F	DRAWING
IE2442J	APPROVAL
IE2442A	APPROVAL
IE0507D	IDENT
IE0198R	BRAND MARKINGS
IE0013Y	CONFIDENTIAL IT
IE0012A	INTERPRETATION
IE0011	INTRP & TOL

NOTE: Caterpillar Confidential Yellow

UNLESS OTHERWISE SPECIFIED DIMENSIONS ARE IN mm DIMENSIONS W/O TOL ARE BASIC	VERSION TYPE	SHEET
PROD. <input checked="" type="checkbox"/> OTHER		



CATERPILLAR

THE INFORMATION HEREON IS THE PROPERTY OF CATERPILLAR SUBSIDIARIES. WITHOUT WRITTEN PERMISSION, ANY COPYING, REPRODUCTION, OR ANY USE EXCEPT THAT FOR WHICH IT IS LOANED IS PROHIBITED.

WIRE-BULK (ELECTRIC
 (12 AWG)(PINK)

466-6717

NOTE A: ASTM B355